

# G6

## TRANSFORMING SINGLE-GAS DETECTION WITH CLOUD CONNECTIVITY

Streamline incident response, improve safety and compliance, and boost operational efficiency with the most cost-effective and direct-to-cloud single-gas detector available—G6.

G6 gives you:

- Vital and up-to-date worker location and safety status information for quick and informed action to get ahead of risks.
- Lower cost and increased operational efficiency through fewer lost devices and IT infrastructure.
- Real-time visibility into the safety and status of worksites to build more informed, data-rich operations.
- Easy-to-use and intrinsically safe device with minimal maintenance and unmatched reliability with a four-year life span and a rechargeable battery that can last up to one year.

It's what makes G6 the new standard in single-gas detection. An innovative—and economical—solution for improving safety and operational efficiency in industrial workplaces.

### Features:



Direct-to-cloud connectivity



Integrated GPS technology



Single-gas detection



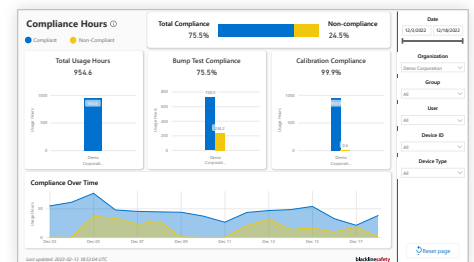
Rechargeable battery



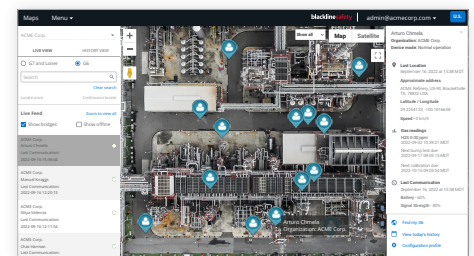
Emergency SOS



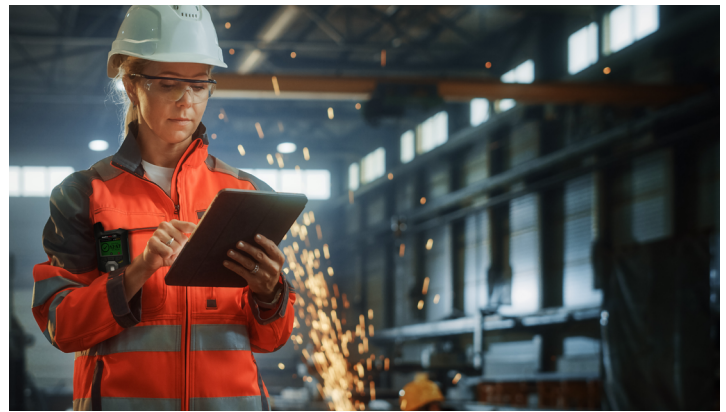
Usage, compliance and gas exposure reporting



Blackline Analytics essential reporting



Blackline Live platform



## DETAILED SPECIFICATIONS

### Standard features

- Emergency SOS
- Find My G6
- Over-the-air configurations
- Automatic over-the-air firmware updates
- Automatic bump tests and calibrations through G6 Dock
- Location Beacon support

### Gas monitoring features

- Single-gas monitoring - CO, H2S, O2, or SO2
- High gas notification
- Low gas notification
- Live gas on display
- Sensor over limit (OL) notification
- Sensor under limit (UL) notification
- Short-term exposure limit (STEL) notification
- Time weighted average (TWA) notification
- Bump test and calibration notification
- Bump test and calibration failure notification

### Size & weight

- Size: 71mm x 110mm x 37mm (2.8" x 4.3" x 1.5")
- Weight: 146g (5.2 oz)

### User interface

- 240 x 320 pixel graphical, high contrast, 6-bit color liquid crystal display
- Menu system and power-on driven by three button keypad
- Multi-language support: EN, FR, ES, DE, IT, NL, PT

### User notification

- Visual: Color display and multi-color lights on top and side
- Sensory: Vibrating
- Audible: ~95 dB @ 30 cm (11.8")

### Power & battery

- Rechargeable Li-ion battery: 1200 mAh
- Battery life: Up to 12 months at 20°C (68°F), depending on configuration, service plan and use
- Charge time: 4 hours

### Approvals

- SAR, RoHS, CE, RCM
- Contains
- FCC ID: W77BLG6C1 IC: 8255A-BLG6C1
- FCC ID: XF6-B001P4V2P1, IC: 8407A-B001P4V2P1
- Canada & USA: Class I Division 1 Group A,B,C,D T4;
- Class I Zone 0 AEx da ia IIC T4 Ga
- IECEX: Ex da ia IIC T4 Ga
- ATEX: Ex da ia IIC T4 Ga
- UKCA: Ex ia IIC T4 Ga

### Location technology

- GPS Radio: 48-channel high sensitivity
- Assisted-GPS: Yes
- GPS Accuracy: ~5 m (16 ft) Outdoors
- Location update frequency: During high urgency events and every 5 minutes to 6 hours, depending on configuration and service plan

### Sensor specifications

GAS	SENSOR TYPE	RANGE	RESOLUTION
<b>CARBON MONOXIDE (CO)</b>	Electrochemical	0-500 ppm	1 ppm
<b>HYDROGEN SULFIDE (H<sub>2</sub>S)</b>	Electrochemical	0-100 ppm	0.1 ppm
<b>OXYGEN (O<sub>2</sub>)</b>	Electrochemical	0-25% vol	0.1% vol
<b>SULFUR DIOXIDE (SO<sub>2</sub>)</b>	Electrochemical	0-100 ppm	0.1 ppm

### Cellular communication

- LTE-M and NB-IoT

### Environmental

- Storage temperature: -30°C to 60°C (-22°F to 140°F)
- Operating temperature: -20°C to 55°C (-4°F to 131°F)
- Charging temperature: 0°C to 45°C (32°F to 113°F)
- Ingress Protection: Designed to meet IP67

### Warranty

- CO, H2S, O2: Four-year limited warranty
- SO2: Two-year limited warranty

### Blackline Live web application

- Cloud-hosted safety monitoring web application is customizable for every customer requirement
- Includes compliance dashboard, map, user roles, device configurations, notification setups, and essential reporting

All specifications subject to change without notice.